

MBTM

INDUSTRIAL

ام بي للصناعة

COMPANY
PROFILE
2026



Beyond Boundaries

COMPANY OVERVIEW

MB Industrial is the manufacturing arm of MB Engineering Group, specializing in high-quality electrical solutions, low-voltage systems, and EV chargers for public and residential use. Through advanced production lines, strict quality control, and adherence to international standards, MBI supports the Group's brands primarily Hager, Beta Electric, and Beta Cables by delivering reliable, efficient, and cost-effective products. MBI continues to expand its capabilities to strengthen Egypt's position as a competitive hub for electrical manufacturing.



VISION

To be the leader in electrical solutions, renowned for our efficiency and reliability, and the ability to power positive change in every society we serve.

MISSION

To deliver cutting-edge electrical solutions that enhance efficiency, safety, and reliability, empowering our societies to thrive in a dynamic world.



Core Values

Trust



Excellence



Empathy



Leadership



Integrity



Accountability



Professionalism



RELIVE THE MILESTONES THAT HAVE DEFINED OUR JOURNEY

2012

Backward Integration: We began manufacturing electrical panels to provide customized solutions.

2014

We listed the company on the Egyptian Stock Exchange to increase growth: EGX Listing

2015

Building a Local Brand: We focused on building a strong local brand in Egypt

2016

IPO and Growth: The IPO was successful, and we began improving operations to raise quality and efficiency.

2018

We expanded into the logistics sector to offer more comprehensive solutions: Diversifying

2019

We launched an export department to open up new global opportunities: Going Global

2021

We launched Sha7en EV charging solutions: Sha7en

2023

Digitalization: We launched the E-Matador

2024

Acquisition: We acquired Maven Cables to strengthen our position in the local market

GROUP AT A GLANCE



MB Engineering Group is a publicly listed company with over 40 years of expertise in Egypt's electrical industry. Through a fully integrated model spanning manufacturing, trading, and services, we operate with seamless synergy across all business segments

Our subsidiaries deliver specialized, high-quality solutions that reflect our commitment to innovation and industry leadership. These include:



Specialized in electrical solutions, low-voltage systems.



Low Voltage Wires & Cables Manufacturing



EV Solutions with a wide public charging & DOOH network



3PL services: last-mile, courier, warehousing & distribution



Distributor Of Global Electrical Brands



B2B Electrical Products E-Commerce Platform



Certified Certificate

Founded in France in 1955, Hager is a world-renowned brand in electrical distribution systems, known for its unmatched reliability, innovation, and compliance with the highest international standards.

We are proud to be the only licensed partner of Hager in Egypt, officially certified to assemble, distribute, and build Hager panels in the local market. This exclusive status reflects our technical competence, commitment to quality, and long-standing relationship with one of Europe's most trusted electrical manufacturers.


With Hager's backing and certification, we bring authentic European-standard panels to Egypt delivering safety, performance, and peace of mind with every installation.

:hager

MB INDUSTRIAL END TO END SOLUTIONS




MB Starts Here



Transformer



Cofree




**Transformer Panel or
MDB (+P.F.)**



Electric Cables



**Pillars
+
Street Lighting**



DC Charger



MB INDUSTRIAL END TO END SOLUTIONS



Transformer Panel or
MDB (+P.F.)

MDB Panel Range

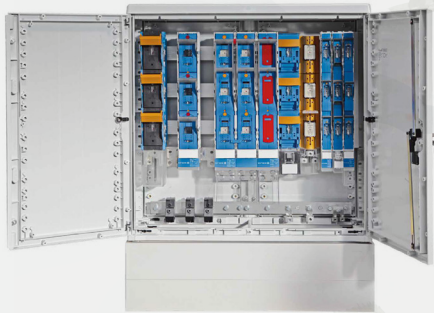
- Type Tested Panels up to 6300A
- S/C withstand Up to 85kA
- UP to IP55

P.F Panel range

- 100 KVAR up to 1000 KVAR
- UP to IP55
- Protection CB & HRC fuses
- Fixed Type or Steps



MB INDUSTRIAL END TO END SOLUTIONS



**Pillars
+
Street Lighting**

Pillar

- Pillar 7-Groups
- Certificated by Ultra High Voltage Lab
- Certificated by Holding Company for Electricity
- With CB , HRC Fuses & Switch Fuses
- Degree of protection IP55
- Other designs up on requests

Street Lighting

- Manual and Automatic Control by Photocell or Astronomical Time Switch
- Degree of protection IP55



MB INDUSTRIAL END TO END SOLUTIONS



- Cofree 3-Groups
- Certificated by Ultra High Voltage Lab
- Certificated by Holding Company for Electricity
- With CB , HRC Fuses & Switch Fuses
- Degree of protection IP55
- Other designs up on requests



Cofree

MB INDUSTRIAL END TO END SOLUTIONS



We provide armored and
PVC cables, rated at 0.6/1
kV, available in sizes up to
 $3 \times 400 + 185 \text{ mm}^2$



Electric Cables

MB INDUSTRIAL END TO END SOLUTIONS



AC and DC public charging solutions with 22kW AC chargers and 50kW DC fast chargers. Each charger is equipped with a built-in DOOH advertising screen, combining sustainable mobility with eco-friendly advertising opportunities.



DC Charger

MB INDUSTRIAL END TO END SOLUTIONS



SMDB OR
SMDB + ATS



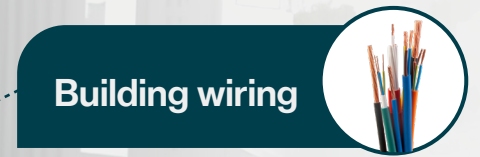
KWHM Panels



Wiring & Junction
Boxes



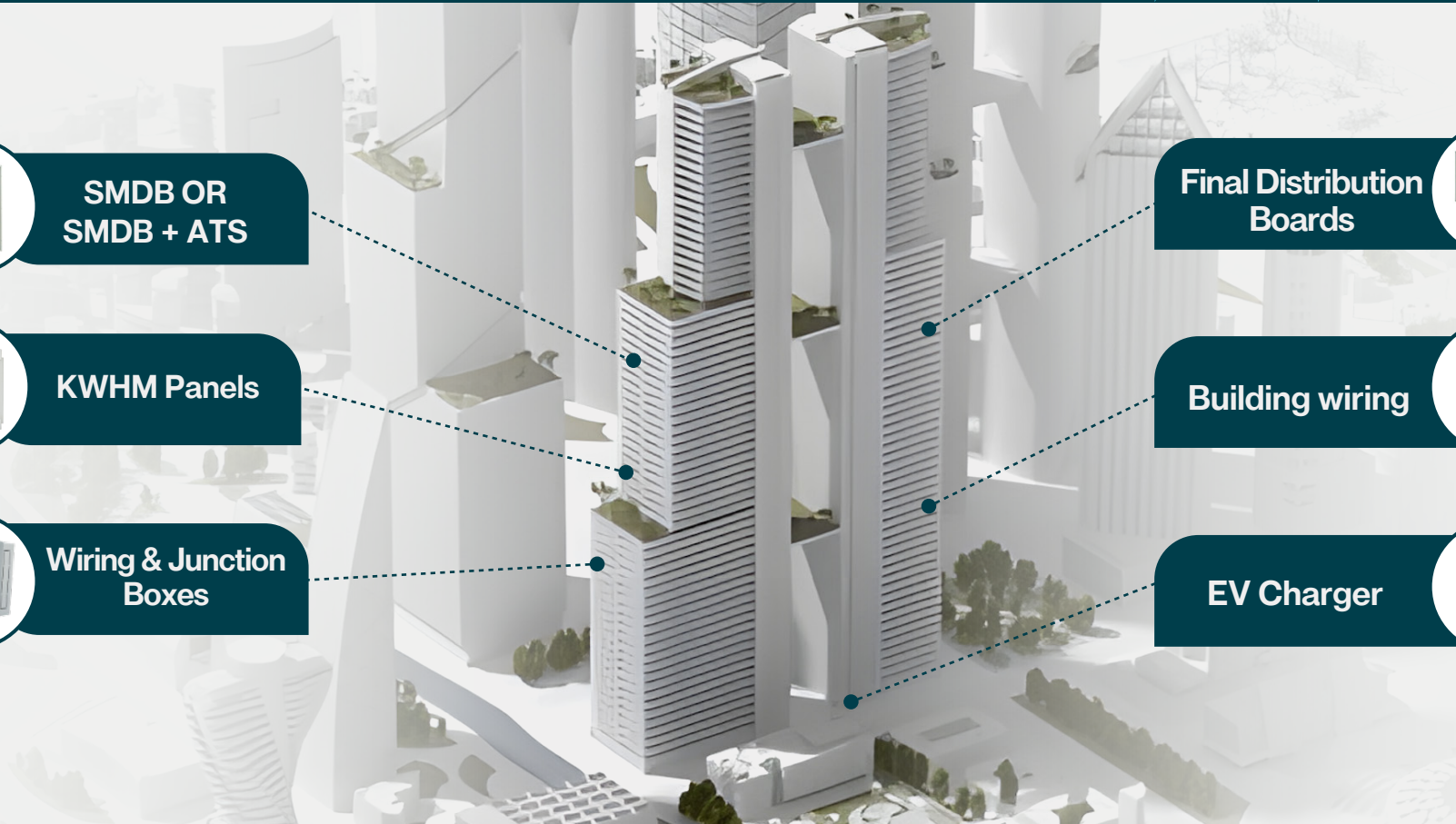
Final Distribution
Boards



Building wiring



EV Charger



MB INDUSTRIAL END TO END SOLUTIONS



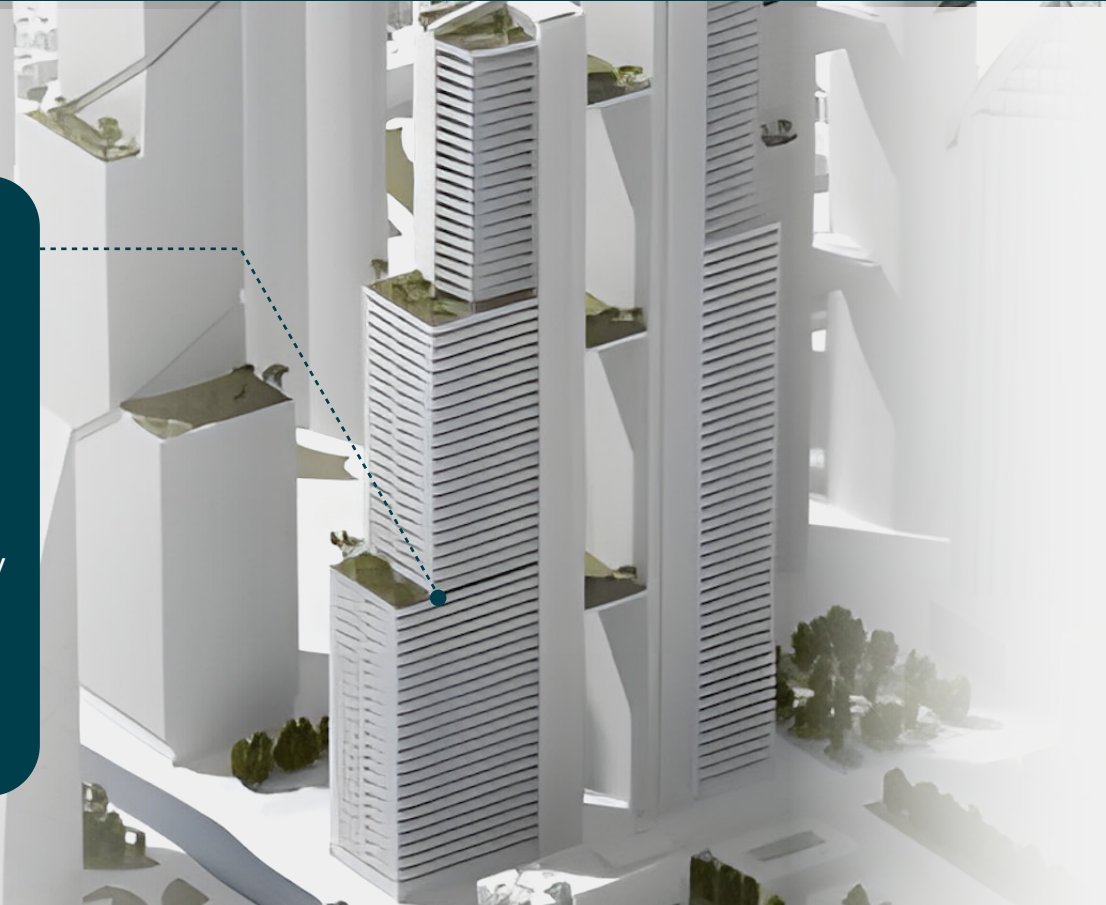
**SMDB or
SMDB + ATS**

SMDB

- Type Tested up to 800A
- Capacity from [2] Ways
- Surface & Flush mounted
- Suitable for MCCBs incomers & outgoing

ATS

- ATS by Contactors or CB's Mechanically and Electrically Interlocked
- Ranges from 4kw up to 600kw
- From 5KVA to 3000KVA
- IP up to 55



MB INDUSTRIAL END TO END SOLUTIONS

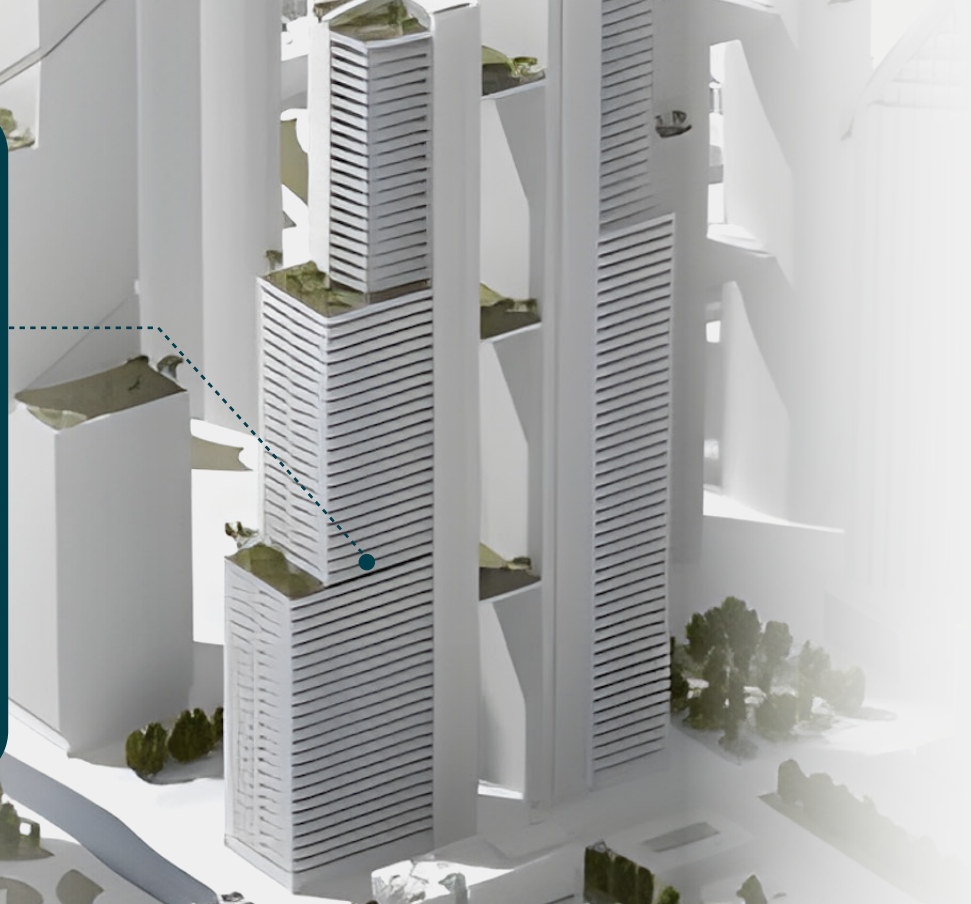


KWHM Panels

- 1PH & 3PH KWH Meters for both types
- Analogue & Electronic.
- 1PH Electronic KWH Metes with Lines (8, 12, 18 & 24)
- New Designs for Pre-Paid KWH Meters

Wiring & Junction Boxes

- Wiring & Junction with different sizes:
- From (15 x 20 x 9) to (30 x 60 x 9) cm



MB INDUSTRIAL END TO END SOLUTIONS



Consumer Units (Invicta VT)

- Fitted without busbar
- 4 modules to 20 modules
- Metal / Opaque Plastic /
- Transparent
- Surface & Flush

DR Enclosures

- 1 row (16 modules) to 6 rows (96 modules)
- 24 modules 4 row to 6 rows
- Flush & Surface


Invicta TPN Boards

- 125A & 250A TPN Board
- ASTA certified as per IEC 61439-3
- IP41
- Surface and Flush



**Final Distribution
Boards**

MB INDUSTRIAL END TO END SOLUTIONS

A 3D architectural rendering of a modern building complex with white facades and greenery. A blue dotted line points from the text box to a specific part of the building.

We offer low-voltage aluminum and copper wires, available with PVC or XLPE insulation. They are rated at 450/750V and come in sizes from 1.5 mm² up to 400 mm².



Building wiring

MB INDUSTRIAL END TO END SOLUTIONS



home The Hager Witty Home Charger offers up to 22 kW in single or three-phase modes, with adjustable power, built-in protection, and weather resistance a compact, reliable solution for home EV charging.



Home Charger

TRACK RECORD



TRACK RECORD



UPTOWN CAIRO – El Mokatam

Products: Service panels – Final branch DBs



MIVIDA
Where life comes together

MIVIDA – New Cairo

Products: MDB - Final branch DBs



CAIRO GATE – Cairo Alex. Desert Road

Products: Pillars – Coffrees - Final branch DBs



MARASSI - North Coast

Products: Pillars – Coffrees - Final branch DBs



SOUL - North Coast

Products: Final branch DBs



AlBurouj – New Cairo

Products: Final branch DBs



TRACK RECORD



BELLE VIE
NEW ZAYED

BELLE VIE – New Zayed

Products: MDB - Final branch DBs



FIFTH SQUARE – New Cairo

Products: Risers – KWHM - Final branch DBs



SWAN LAKE
October

SWAN LAKE WEST – 6th October

Products: Final branch DBs



BEIT AL BAHR
ELABD RESORT
SIDIHENEISH

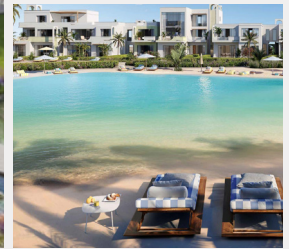
BEIT AL BAHR - SIDI HENEISH

Products: Final branch DBs



CRYSTAL COVE - Hurghada

Products: MDB – SMDB – Final branch DBs



TRACK RECORD



NEW GIZA

Products: Final branch DBs



EDGE – Smart village

Products: MDB – SMDB – Final branch DBs



Ahalina Project

Products: Final branch DBs

CLOUD NINE

Cloud Nine

Products: MDB – SMDB – ATS – Final branch DBs



Oasis Mixed Housing New administrative Capital

Products: Final branch DBs



TRACK RECORD



king salman international university

Products: MDB – SMDB – Final branch DBs



Al Assema Hospital - Dokki

Products: MDB – SMDB – Final branch DBs



El Manarat school

Products: Jk(s)



Egypt Japan University Of Science & Technology (E-Just)

Products: MDB – SMDB – Final branch DBs



sama clinic

Products: MDB – SMDB – ATS – Final branch DBs



THANK YOU



 **19015**

www.mb.com.eg.com
info@mb-egypt.com